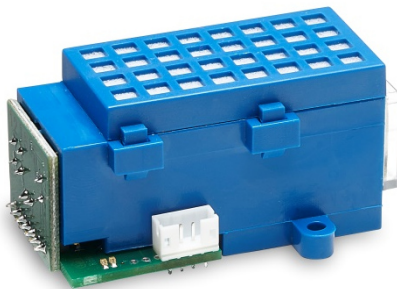


## smartMODUL BASIC<sup>EVO</sup>

Infrared gas sensor CO<sub>2</sub> // Carbone Dioxide // 5 Vol.-%  
smartGAS item number: B3-212506-03000



- Pre calibrated
- Gas entry by diffusion
- 3.3 - 6 V DC supply voltage
- Modbus ASCII or RTU
- Status indication by LED

Non Dispersive Infrared (NDIR) gas sensor for ambient air monitoring using dual wavelength technology. Although designed especially for refrigeration leak detection in small concentration ranges (ppm range) for wall mount detectors and room air monitoring devices the BASIC<sup>EVO</sup> can also be applied in food storage facilities, air conditioning systems and various areas of scientific research.

The BASIC<sup>EVO</sup> CO<sub>2</sub> sensor can easily be integrated into OEM systems, where long term stability, repeatability and reliable performance are required. It can be utilised as a Freon detector in industrial refrigeration facilities but can also be used for ambient air monitoring in the field of air conditioning devices. Other scopes of applications comprise continuous gas monitoring in controlled environment chambers and food storage rooms as well as usage for various areas of scientific research. Special build-in solutions to provide IP54 protection and easy field gas-calibration are available.

Modbus ASCII or RTU data communication offer a variety of options to connect the BASIC<sup>EVO</sup> gas sensor to a controller.

### APPLICATION EXAMPLE

HOTEL AIR CONDITIONING  
FOOD STORAGE ROOMS  
INDUSTRIAL REFRIGERATION  
FOOD TRANSPORT  
RESEARCH

**smartMODUL BASIC** <sup>EVO</sup>

 Infrared gas sensor CO<sub>2</sub> // Carbone Dioxide // 5 Vol.-%  
 smartGAS item number: B3-212506-03000

<b>general features</b>	
Measurement principle:	Non Dispersive Infra-Red (NDIR), dual wavelength
Measurement range:	0 .. 5 Vol.-% Full Scale (FS)
Gas supply:	by diffusion (atmospheric pressure)
Dimensions:	62 mm x 37 mm x 30 mm (L x W x H)
Warm-up time:	< 2 minutes (start up time)
	< 11 minutes (fade in finished)
	< 30 minutes (full specification)
<b>Measuring response*</b>	
Response time (t <sub>90</sub> ):	appr. 60 s
Digital resolution (@ zero):	0.001 Vol.-%
Detection limit (3 σ):	≤ 0.025 Vol.-%
Repeatability:	≤ ± 0.025 Vol.-%
Linearity error (straight line deviation):	≤ ± 0.05 Vol.-%
Long term stability (span):	≤ ± 0.1 Vol.-% over 12 month period
Long term stability (zero):	≤ 0.07 Vol.-% over 12 month period
<b>Influence of T and P*</b>	
Temp. dependence (zero):	≤ ± 0.007 Vol.-% per °C
Temp. dependence (span):	≤ ± 0.015 Vol.-% per °C
Pressure dependence:	± 0.156 Vol.-% of measurement value / hPa
<b>Electrical inputs and outputs</b>	
Supply voltage:	3.3 V .. 6.0 V DC
Supply current (peak):	< 400 mA @ 3.3 V, < 240 mA @ 5.0 V
Inrush current:	< 600 mA
Average power consumption:	< 800 mW
Digital output signal:	Modbus ASCII / RTU via UART, autobaud, autoframe
Calibration:	zero and span by SW
<b>Climatic conditions</b>	
Operating temperature:	-20 .. + 40 °C
Storage temperature:	-20 .. + 60 °C
Air pressure:	800 .. 1150 hPa
Ambient humidity:	0 .. 95 % relative humidity (not condensing)
* Typical values related to 1013 hPa and 22 °C for dry (not condensing) and clean sample gas. Stated values exclude calibration gas tolerance.	

All rights reserved. Any logos and/or product names are trademarks of smartGAS. The reproduction, transfer, distribution or storage of information contained in this brochure in any form without the prior written consent of smartGAS is strictly prohibited. All specifications – technical included – are subject to change without notice. Depending on the application, the target gas and the measurement range the technical data may differ. No liability is accepted for any consequential losses, injury or damage resulting from the use of this document or from any omissions or errors herein. The data is given for guidance only. It does not constitute a specification or an offer for sale.

For more information, please visit [www.smartGAS.eu](http://www.smartGAS.eu) or contact us at [sales@smartgas.eu](mailto:sales@smartgas.eu)

Please consult smartGAS sales for parts specified with other temperature and measurement ranges. At first initiation and depending on application and ambient conditions recalibration is recommended. Recurring cycles of recalibration are recommended.